



Design similar to DIN 28121
($\Delta P \leq$ ANSI Class Rating)

USE:

Container sight glasses type 322A are suitable for mounting on existing support flanges according to ASME B16.5. The sight glasses are delivered pre-assembled at the factory and ready for installation. The pressure-temperature limits according to DIN EN 1092-1 apply!

The design, construction and manufacture were carried out in accordance with the AD 2000 regulations and the PED 2014/68/EU.

INSTALLATION INSTRUCTIONS:

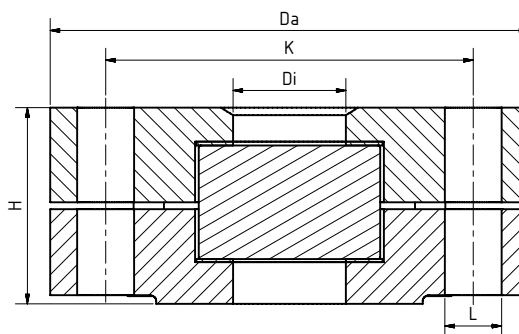
Gaskets matching the sealing surfaces should be used. The screw material should be equivalent or higher to that of the sight glass flange. Always use screws that match the bore pattern! If possible, the screw thread and the screw head should be lubricated.

OPERATING CONDITIONS

Temperature: (depending on glass and gasket)	$\leq 280^{\circ}\text{C}$	Borosilicate glass (DIN 7080 or similar)
	$\leq 300^{\circ}\text{C}^1$	Mica discs
Pressure:	$\leq 20 \text{ bar(g)}$ bis 250 bar(g)^1	

1) Nominal pressure depending on ANSI Class Rating

DRAWING:



MATERIALS

Base flange:	1.4571; 1.4541; 1.4404; 1.4539; 2.4605
Glass:	Borosilicate glass (DIN 7080 or similar)
Gasket:	Graphite
Screws:	A4-70
Special materials on request	

NPS	1 ½"	2"	3"	4"
Di [mm]	40	50	80	100
H [mm]	Depending on ANSI Class Rating and NPS			
Da [mm]	correspond to ASME B 16.5			
L [mm]				
K [mm]				
Other sizes upon request				

PRODUCT CODE:

Example to explain the code composition

11-322A-4-2-1-1-7-0

GROUP	TYPE	ANSI CLASS RATING	NPS	BASE FLANGE ¹	GLASS	GASKET	VARIANT
11	322A	1) 150	1) 1 ½"	1) 1.4571	1) Borosilicate glass according to DIN 7080 or similar	7) Graphite	0) Standard
		2) 300	2) 2"	2) 1.4541			
		3) 400	3) 3"	3) 1.4404			
		4) 600	4) 4"	4) 1.4539	2) Borosilicate glass ² mica protected		
		5) 900	5) larger	5) 2.4605			
		6) 1500		6) Special			
		7) higher					

1) Cover flange according to quotation/order confirmation

2) Similar to DIN 7080



Unless otherwise stated, the highlighted factory standard is supplied.

EXAMPLE:

11-322A-4-2-1-1-7-0 equivalent to:

ACI Type 322A

ANSI Class Rating 600 Lbs

NPS 2"

Base flange made of 1.4571

Cover flange made of 1.4571

Borosilicate glass similar to DIN 7080

Gasket graphite

Standard version

CONSTRUCTION:

Cover flange

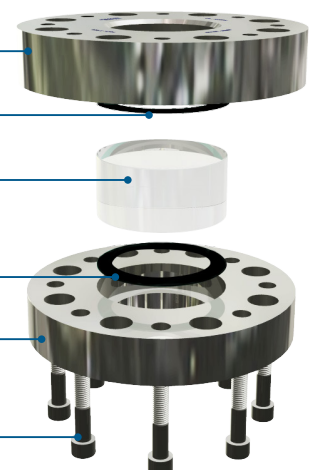
Gasket (on the atmosphere side)

Sight glass

Gasket (on the media side)

Base flange

Screws



For aggressive media or steam, mica discs should be used to protect the glass.

QUICK OVERVIEW:



Class 150 Lbs up to
1500 Lbs



heat-resistant up to
300 °C



for liquid
media



for gaseous
media



Nominal size
1 ½" bis 4"



Customized products
possible



Additional equipment
available

OPERATING CONDITIONS:

Operating conditions depend on the
choice of glass and gaskets:

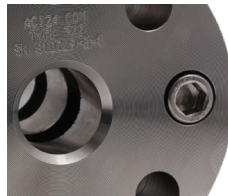
		SIGHT GLASS		GASKETS
		Borosilicate glass (DIN 7080 or similar)	Borosilicate glass (DIN 7080 or similar) +mica discs	Graphite > 400 °C
TEMPERATURE	up to 280 °C	✓	✓	✓
	up to 300 °C	✗	✓	✓
PRESSURE	20 up to 250 bar (g)	✓	✓	✓

✓ suitable ✗ unsuitable

OPTIONAL EQUIPMENT:



Double glazing with heating
element



Double glazing



LED light

> for Ex and non-Ex areas



Mica discs

> up to 300°C with borosilicate glass
DIN 7080

ATTENTION!



The pressure-temperature limits according to ASME B16.5 apply!

Our tool of the same name is available on our website for this purpose.
(www.ACI24.com, in the Service category, subcategory Tools)



ACI Industriearmaturen GmbH

✉ info@aci24.com ☎ +49 (0) 2461 91634 00
 🌐 www.aci24.com 📠 +49 (0) 2461 91634 44
 📍 Königskamp 19 · 52428 Jülich · Germany

Ebora B.V. Process Automation

✉ info@ebora.nl ☎ +31 (0) 263 706 830
 🌐 www.ebora.nl
 📍 Poort van Midden Gelderland Rood 8 · 6666LT Heteren
 The Netherlands