



Lightweight version with
50 mm vision panel

USE:

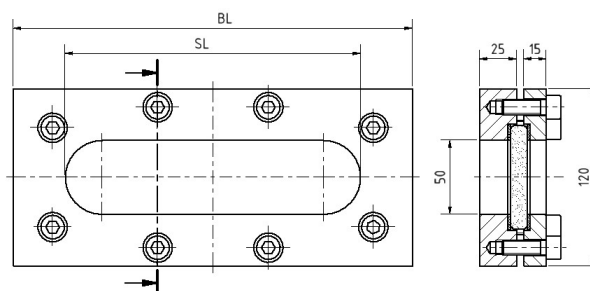
Longitudinal sight glasses are used to observe and illuminate the inside of closed vessels (boilers, tanks, silos, etc.). Sight glass fittings type 334 are rectangular longitudinal sight glass fittings for welding in or on, each completed with a sight glass plate inserted between the gaskets and firmly screwed in place.

INSTALLATION INSTRUCTIONS:

After welding in the base frame, check whether the sealing surface has warped. If necessary, this must be reworked! Also observe the specified torques for the screw connection, according to the operating and maintenance instructions! The operating pressure does not apply to the base frame, this must be tested together with the pressure device according to AD leaflet B9!

OPERATING CONDITIONS		
Temperature: (depending on glass and gasket)	≤ 280°C	Borosilicate glass transparent similar to DIN 7081
	> 280°C	on request
Pressure:	≤ 3 bar(g)	

DRAWING:



MATERIALS	
Base frame:	1.4571; 1.4404
Glass:	Borosilicate glass transparent similar to DIN 7081
Gasket: ¹	PTFE; FKM; NBR; C4400; Silicone; EPDM; Graphite
Screws:	A4-70
Special materials on request	

BL [mm]	270	340	410	480	550	620	690	760
SL [mm]	200	270	340	410	480	550	620	690
Weight [kg]	7,4	9,0	10,6	12,2	13,8	15,4	17,0	18,6

1) See „INFO-gasket“ leaflet

PRODUCT CODE:

Example to explain the code composition

11 - 334 - 480 - 2 - 1 - 4 - 000						
GROUP	TYPE	OVERALL LENGTH	BASE FRAME ¹	GLASS	GASKET	VARIANT
11	334	270	2) 1.4571	1) Borosilicate glass transparent similar to DIN 7081	1) PTFE	000) Standard
		340	3) 1.4404		2) FKM	
		410	8) Special	6) Special	3) NBR	
		480			4) C4400	
		550			5) Silicone	
		620			6) EPDM	
		690			7) Graphite	
		760			8) Special	

1) Cover frame according to quotation/order confirmation



Unless otherwise stated, the highlighted factory standard is supplied.

EXAMPLE:

11-334-480-2-1-4-000 equivalent to:

ACI Type 334

480 mm overall length

Base frame made of 1.4571

Cover frame made of 1.4571

Borosilicate glass transparent, similar to DIN 7081

Gasket C4400

Standard version

- special length possible on request

- other equipment optiona

CONSTRUCTION:

Screws

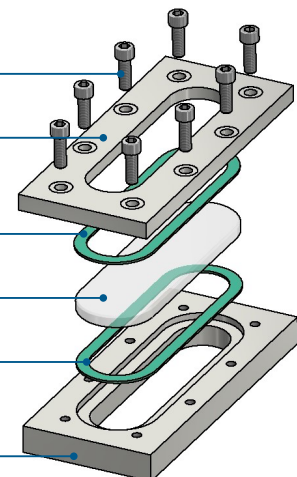
Cover frame

Gasket (on the atmosphere side)

Sight glass

Gasket (on the media side)

Base frame



QUICK OVERVIEW:



PN 3
≤ 3 bar(g)



heat-resistant up to
280 °C



for liquid
media



for gaseous
media



Overall length
BL 270 up to 760



Customized products
possible



> 50 gasket
materials



Additional equipment
available

OPERATING CONDITIONS:

Operating conditions depend on the
choice of glass and gaskets:

		SIGHT GLASS	GASKETS						
		Borosilicate glass transparent, similar to DIN 7081	PTFE max. 200 °C	FKM max. 200 °C	NBR max. 80 °C	C4400 max. 175 °C	Silicone max. 180 °C	EPDM max. 130 °C	Graphite > 400 °C
TEMPERATURE	up to 80 °C	✓	✓	✓	✓	✓	✓	✓	✓
	up to 130 °C	✓	✓	✓	✗	✓	✓	✓	✓
	up to 150 °C	✓	✓	✓	✗	✓	✓	✗	✓
	up to 175 °C	✓	✓	✓	✗	✓	✓	✗	✓
	up to 200 °C	✓	✓	✓	✗	✗	✗	✗	✓
	up to 280 °C	✓	✗	✗	✗	✗	✗	✗	✓
	> 280 °C	on request	on request						
PRESSURE	up to 3 bar (g)	✓	✓	✓	✓	✓	✓	✓	✓

✓ suitable ✗ unsuitable

OPTIONAL EQUIPMENT:



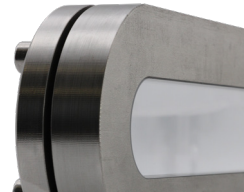
Mica discs

- > bis 300°C mit Borosilikatglas
DIN 7081 transparent



Nearly cavity-free design

- > with stepped glass



FEP protective screen/ coating

- > for high pH values



For aggressive media or steam, mica lenses should be used to protect the glasses. (Not possible for reflective glasses, as this would cause them to lose their function).

ACI Industriearmaturen GmbH

✉ info@aci24.com ☎ +49 (0) 2461 91634 00
🌐 www.aci24.com 📠 +49 (0) 2461 91634 44
📍 Königskamp 19 · 52428 Jülich · Germany

Ebora B.V. Process Automation

✉ info@ebora.nl ☎ +31 (0) 263 706 830
🌐 www.ebora.nl
📍 Poort van Midden Gelderland Rood 8 · 6666LT Heteren
The Netherlands