



With LRQA Deutschland GmbH (formerly Lloyd's Register Deutschland GmbH) design appraisal

USE:

Longitudinal sight glass fittings are used to observe and illuminate the inside of closed vessels (boilers, tanks, silos, etc.).

Sight glass fittings type 336 are oval longitudinal sight glass fittings for welding in or on, each completed with a sight glass plate inserted between the gaskets and screwed tight.

INSTALLATION INSTRUCTIONS:

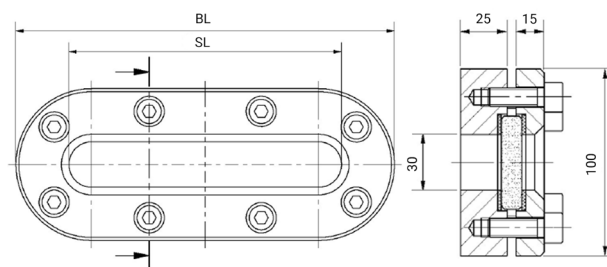
After welding in the base frame, check whether the sealing surface has warped. If necessary, this must be reworked! Also observe the specified torques for the screw connection, according to the operating and maintenance instructions!

The operating pressure does not apply to the base frame, this must be tested together with the pressure device according to AD leaflet B9!

OPERATING CONDITIONS

Temperature: (depending on glass and gasket)	$\leq 280^{\circ}\text{C}$	Borosilicate glass transparent similar to DIN 7081
Pressure:	$\leq 6 \text{ bar(g)}$	

DRAWING:



MATERIALS

Base frame:	1.4571; 1.4404
Glass:	Borosilicate glass transparent similar to DIN 7081
Gasket:¹	PTFE; FKM; NBR; C4400; Silicone; EPDM; Graphite
Screws:	A4-70
Special materials on request	

BL [mm]	250	310	370	430	490	550	610	670
SL [mm]	180	240	300	360	420	480	540	600
Weight [kg]	5,6	6,9	8,2	9,6	10,9	12,2	13,6	14,9



The design appraisal by LRQA Deutschland GmbH (formerly Lloyd's Register Deutschland GmbH) does not replace the final acceptance of the entire plant! A new final acceptance of the plant or vessel is required after welding of the base frame.

1) See „INFO-gasket“ leaflet

PRODUCT CODE:

Example to explain the code composition

11 - 336 - 430 - 2 - 1 - 4 - 000							
GROUP	TYPE	OVERALL LENGTH	BASE FRAME ¹	GLASS	GASKET	VARIANT	
11	336	250	2) 1.4571	1) Borosilicate glass transparent similar to DIN 7081	1) PTFE	000) Standard	
		310	3) 1.4404	6) Special	2) FKM		
		370	8) Special		3) NBR		
		430			4) C4400		
		490			5) Silicone		
		550			6) EPDM		
		610			7) Graphite		
		670			8) Special		

1) Cover frame according to quotation/order confirmation



Unless otherwise stated, the highlighted factory standard is supplied.

EXAMPLE:

11-336-430-2-1-4-000 equivalent to:

ACI Type 336

430 mm overall length

Base frame made of 1.4571

Cover frame made of 1.4571

Borosilicate glass transparent similar to DIN 7081

Gasket C4400

Standard version

- Special lengths on request

- other equipment optional

CONSTRUCTION:

Screws

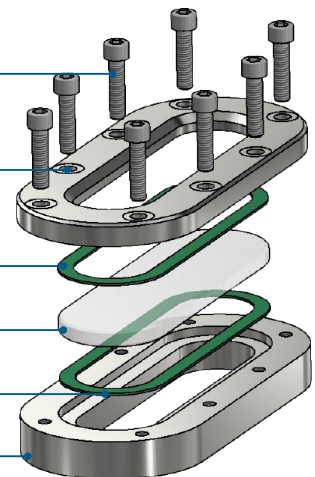
Cover frame

Gasket (on the atmosphere side)

Sight glass

Gasket (on the media side)

Base frame



For aggressive media or steam, mica discs should be used to protect the glass.

QUICK OVERVIEW:



PN 6
≤ 6 bar(g)



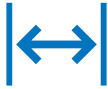
heat-resistant up to
280 °C



for liquid
media



for gaseous
media



Overall length
BL 250 up to 670



Customized products
possible



> 50 gasket
materials



Additional equipment
available

OPERATING CONDITIONS:

Operating conditions depend on the
choice of glass and gaskets:

		SIGHT GLASS	GASKETS						
		Borosilicate glass transparent, similar to DIN 7081	PTFE max. 200 °C	FKM max. 200 °C	NBR max. 80 °C	C4400 max. 175 °C	Silicone max. 180 °C	EPDM max. 130 °C	Graphite > 400 °C
TEMPERATURE	up to 80 °C	✓	✓	✓	✓	✓	✓	✓	✓
	up to 130 °C	✓	✓	✓	✗	✓	✓	✓	✓
	up to 150 °C	✓	✓	✓	✗	✓	✓	✗	✓
	up to 175 °C	✓	✓	✓	✗	✓	✓	✗	✓
	up to 200 °C	✓	✓	✓	✗	✗	✗	✗	✓
	up to 280 °C	✓	✗	✗	✗	✗	✗	✗	✓
PRESSURE	up to 3 bar (g)	✓	✓	✓	✓	✓	✓	✓	✓

✓ suitable ✗ unsuitable

OPTIONAL EQUIPMENT:



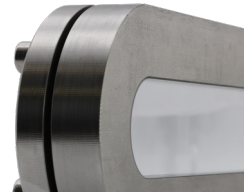
Mica discs

- > up to 300°C with borosilicate glass
DIN 7081 transparent



Nearly cavity-free design

- > with stepped glass



FEP protective screen/ coating

- > for high pH values

ACI Industriearmaturen GmbH

✉ info@aci24.com ☎ +49 (0) 2461 91634 00
🌐 www.aci24.com 📠 +49 (0) 2461 91634 44
📍 Königskamp 19 · 52428 Jülich · Germany

Ebora B.V. Process Automation

✉ info@ebora.nl ☎ +31 (0) 263 706 830
🌐 www.ebora.nl
📍 Poort van Midden Gelderland Rood 8 · 6666LT Heteren
The Netherlands